

CityView

CityView is the City of Baltimore's mapping portal that provides information on a series of topics of interest to the citizens of Baltimore as well as visitors and the City's staff. More information is available for a specified Location through a Find capability that prompts for the type of user, a category of information, and then a specific topic.

The City wants feedback from users through the left panel CityView section which has a Comments button. The CityView site will be updated on a frequent basis and feedback from users will be an important source for these updates.

Help Contents

CityView Overview

Application Tools and Shortcuts

Map Navigation

Left Panel

Base Map Selection

Thematic Overlay Selection

Action Tool Selection

Search for Information

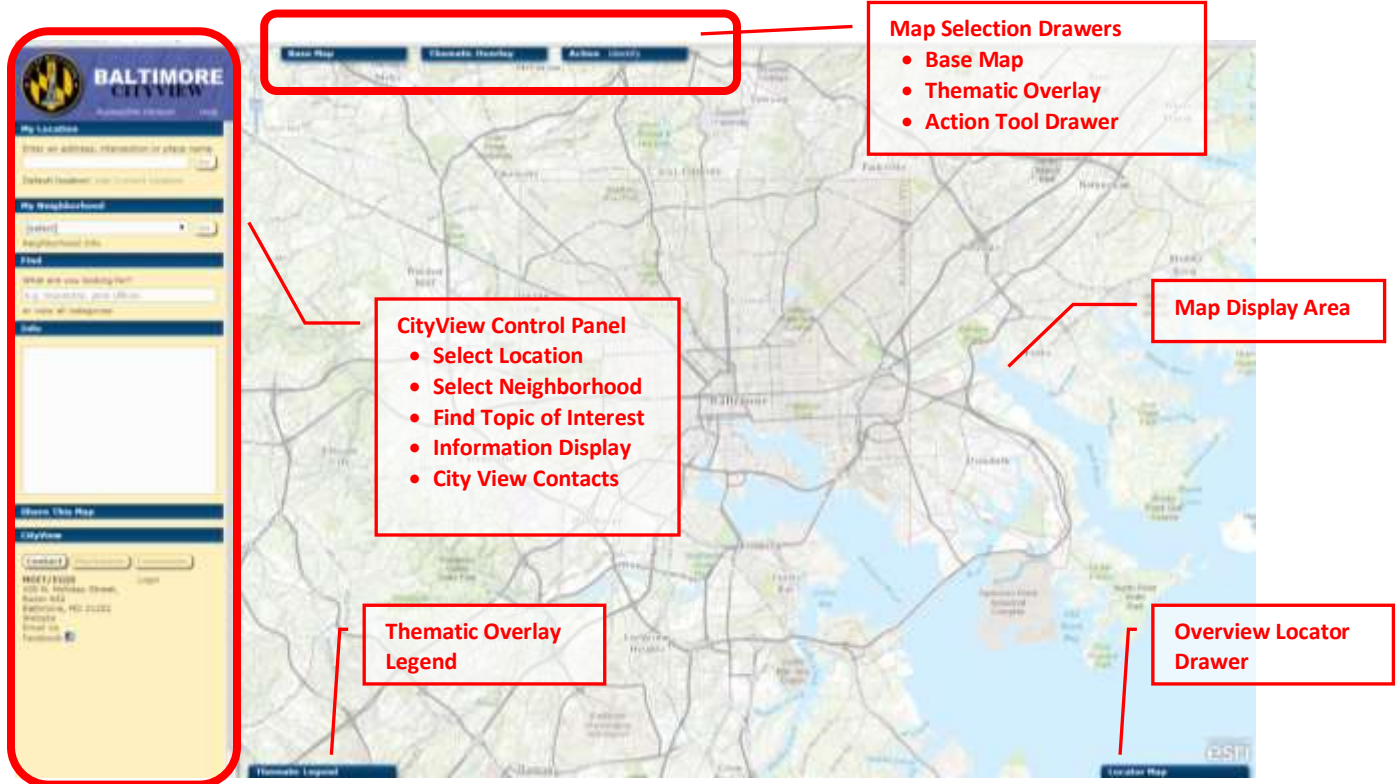
My Location

Find

Feedback

Accessibility

CityView Overview



The CityView web application has a Map Display Area, a left-panel with CityView functions, and a set of drawers along periphery of the map display area.

Click on the Control Panel section headings to open or close a section. Click on the drawer headings to open or close a drawer of options. The mouse cursor will change to a pointing hand when hovering over the heading portion.

It is important to note that this web application utilizes some of the latest features of the web browser that may require you to upgrade your browser software. This site functionality is optimized for the latest 2 versions of the following web browsers:

- Internet Explorer
- Google Chrome
- Firefox
- Safari

Some functions of the CityView site also start new browser windows, so pop-up blocker settings may need to be adjusted to allow these windows to appear.

Application Tools and Shortcuts

Map Navigation

Zoom In/Out In addition to using the graphical zoom slider, a mouse device with a scroll wheel can be used to zoom in and out.

Zoom Window While the mouse cursor is on the map display area, hold the Shift key on the keyboard and press and hold the left mouse button while dragging the mouse to create a zoom window. When the mouse button is released the map display area will change to the zoom window area.

Zoom to City The icon above the zoom slider bar will zoom back to the full extent of the City.

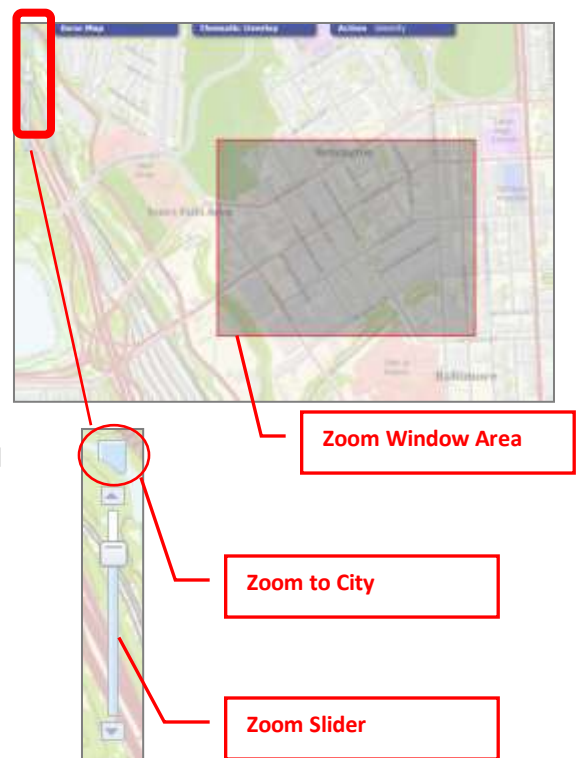
Zoom Slider Click and drag the slider up and down to zoom in and out.

Pan Simply use the left mouse button to click and hold for panning around the map.

Select Area The CityView left panel has several options for zooming to a specific area.

My Location is where you can input a street address, place name, or street intersection. If no exact match is found, a list of possible matches can be viewed. Clicking on “Use Current Location” allows you to save your location and easily zoom back to it later. You can also click on “Suggestions” for a list of similar matches.

My Neighborhood provides a list of the City’s neighborhoods and will zoom the map to that area of the City. The Neighborhood Info link will populate the Info area of the CityView left panel with information about the selected neighborhood.



My Location	
Enter an address, intersection or place name	
<input type="text" value="200 ARCH ST"/>	<input type="button" value="Go"/>
Default location: Use Current Location	
Not where you expected? Suggestions	
My Neighborhood	
<input type="text" value="University Of Maryland"/>	<input type="button" value="Go"/>
Neighborhood Info	

Left Panel (CityView Control Panel) Sections

Open/Close Section Click the title bar of each section to open and close that specific section.

Open/Close All Sections Use the Shift-Left Mouse click on a section to open/close all sections.

Base Map Selection

The CityView site offers a number of Base Map choices selected from the pull-down menu. These options will continually be refined and expanded. The base map is the bottom layer in the map display. The Thematic Overlay selected in the next CityView map tool is placed on top of the Base Map.

Both the Base Map and the Thematic Overlay Map have a transparency slider so you can individually adjust the ability to see the two maps together. Slide the transparency tool left to increase transparency and right to decrease transparency.

The Base Map tool also provides the ability to produce a map suitable for printing. Click on the Printable Map option to generate a pdf formatted map suitable for printing. Since the printed map uses a higher resolution map image, this option could take a little time to generate the map. In some cases, the selected Base Map can't be used for the Printable Map option. The print option will be disabled in those cases.

Based on the currently selected location, the Base Map tool also provides a link to a Google Street View or Bing Bird's Eye View that will pop up in another browser window.

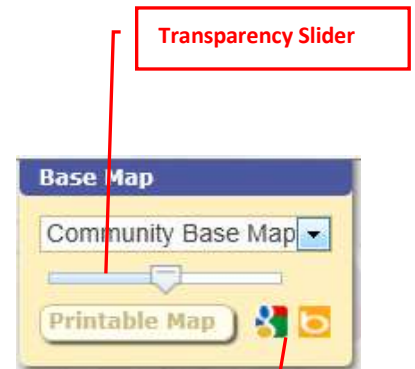
Thematic Overlay Selection

The Thematic Overlay selection tool provides for a single thematic map layer that will be overlaid on the Base Map. Thematic Overlays are organized by categories and topics.

There is also an Export Data function that will extract the information about the currently selected Category and Topic to an Excel spreadsheet file (.xls).

Action Tool Selection

The Action drawer includes a tool for identifying a map feature from the currently selected Thematic Overlay topic (i.e. Fire Stations) and will present this information in the Info area of the CityView left panel.



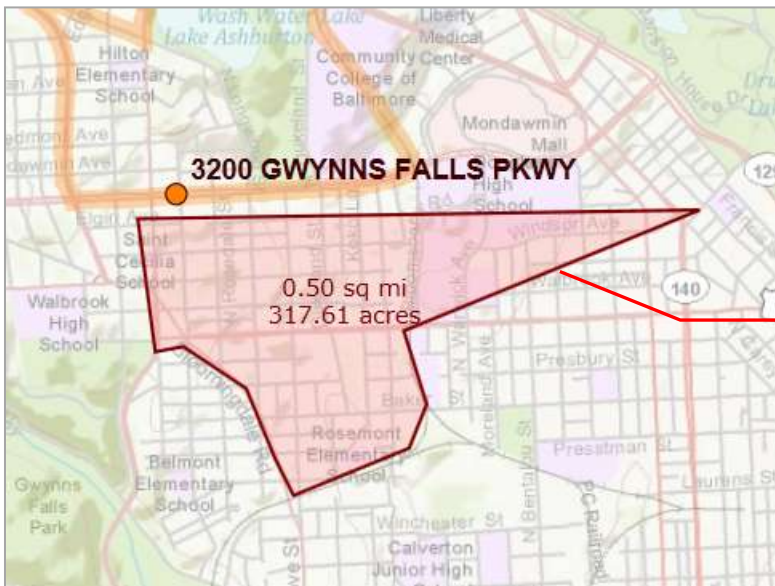
Set My Location is used to click on the map: derive the closest address at that point, and set it as My Location for other functions.

The Set My Location option will show the closest address on the map display, enter that address in the My Location section, and set the neighborhood that address is in on the My Neighborhood left panel section. Sometimes the click location on the map will not return an address within a default distance, so the action may not appear to be working. Simply try clicking again in an adjacent area until a valid address is returned.



Measure tools such as Length, Area, and Radius allow you to perform measurements from the map display. For example, the Measure Area tool allows you to draw a polygon on the map display and the area in square miles as well as acres will be calculated. Once the tool is selected, move the mouse to draw a polygon using left mouse button clicks to define the shape.

My Location map symbol and neighborhood selection



Measure Area Tool

Double click the left mouse button to stop the drawing of the measurement area, distance, or radius.

Search for Information

The typical use of the CityView application involves the following steps:

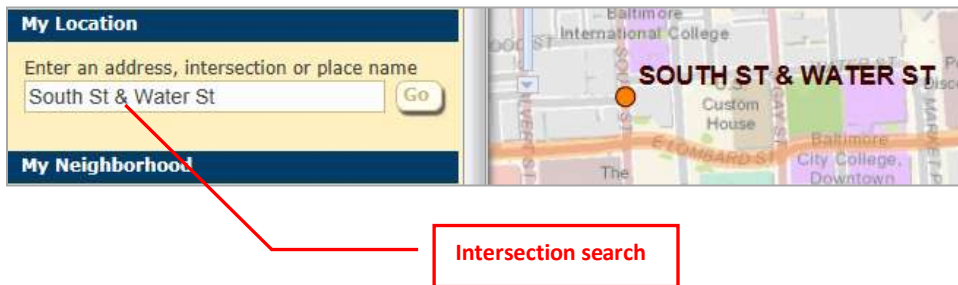
- Set My Location
- Find Information in a particular category and topic

My Location

Many of the options of the CityView application depend on the location of interest to the user. Use the My Location text box to enter an address, intersection, or common place name. The closest address found will be shown on the map and the neighborhood is also set. Other address matches may also be available by clicking on the “Suggestions” link. Then click on one of the addresses in this list to set the location and view on the map. Click on “Use Current Location” to save your location and easily zoom back to it after navigating to a different location or refreshing your browser.



The search for a location can also use a street intersection. Simply enter two street names with an “@”, “&”, “and” between the two names. You do not need to include the suffix (Rd, St, Dr, etc.).





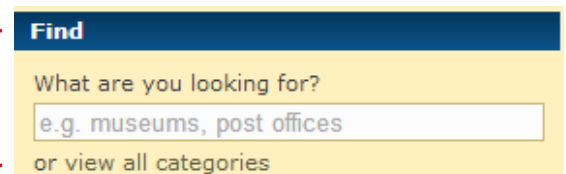
The search can also use Place Names rather than a street address or intersection. If the search is not returning any results, it is often because the search criteria entered is too specific. Try changing the search entry to less specific criteria.

Find

Once a location is specified through the My Location section, the Find section of the left panel is where various topics of information are searched. You can type in what you are looking for or click “view all categories” to select from a list of predefined categories:

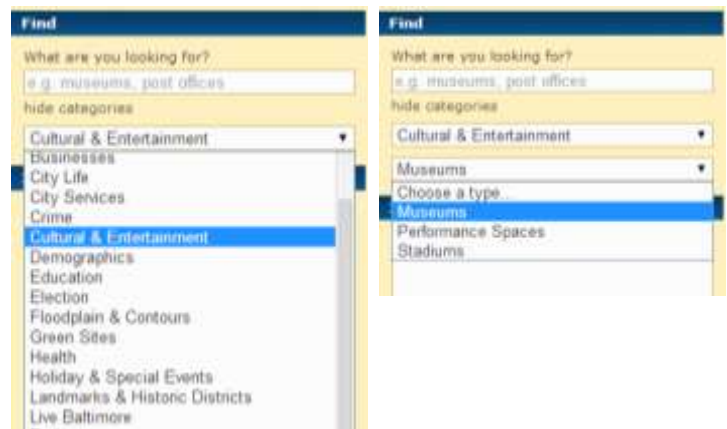
- Enter search text here

- Or click to view categories



Once a category is selected, a list of types will become available to choose from.

Once the Find options are set, the search is initiated using the currently selected location. An answer is returned in the Find results box, the Thematic Overlay is changed to highlight the category and topic of the Find question, and the Info left panel section will contain additional information for the selected result.





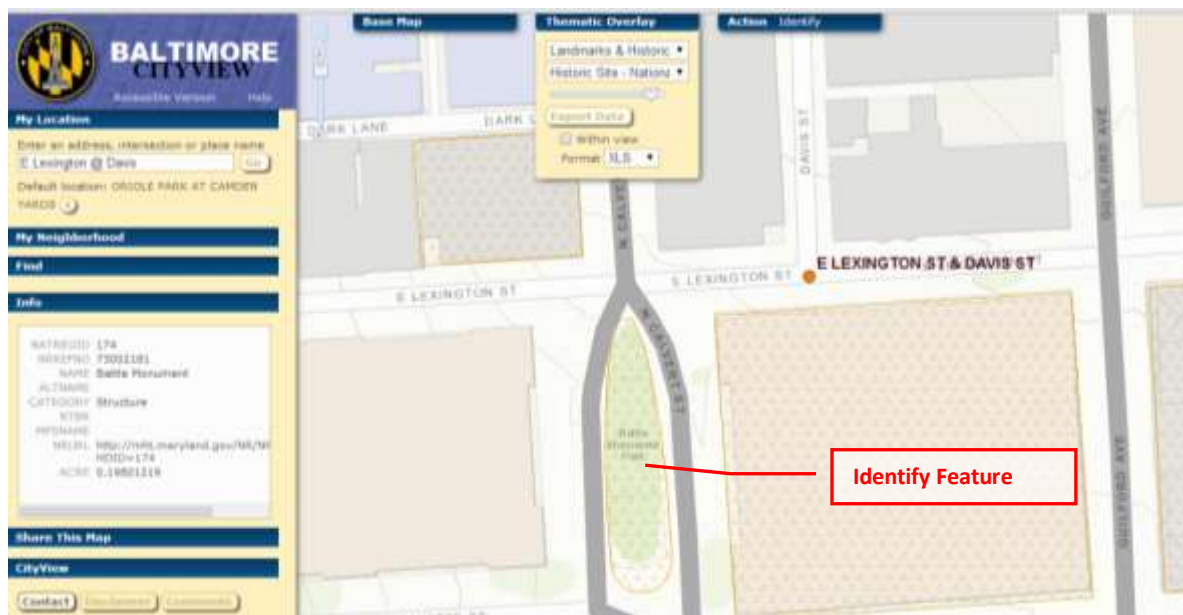
In the following example, the user has searched by intersection (E Lexington @ Davis) and then the resident is searching through the Cultural Institutions category, looking for the closest Museums. This search will result in a number of museums in proximity to the currently set location.

Clicking on the “Peale Museum” in the list will zoom the map showing the extent of My Location and the selected search feature. A straight line distance will be drawn on the map with a label of the distance in miles.

The Info section will also show more information and includes a link to Directions provided from Google. Clicking on this link will open a new web browser and provide directions on how to get from My Location to the selected Find feature.



After a Find search is done, you can explore the map further simply by using the Thematic Overlay drawer Category and Topic pull-down lists. Selecting different topics from the Thematic Overlay will override the Find selections.



Based on the selected topic, the Identify tool is used to click on the map for a displayed feature and access more information on it in the Info section.

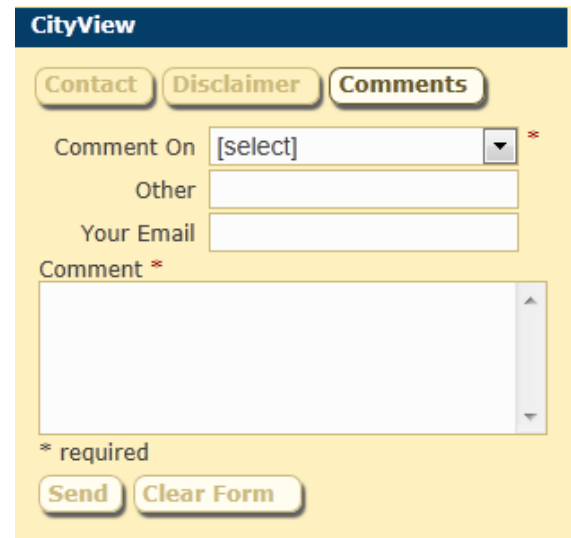
Feedback

The City would like feedback from CityView users on any problems encountered or how to improve the application. Go to the CityView section of the left-control panel and click on Comments.

There are a number of categories of comments already defined, but you can enter "Other" as a category and then type in what the comment is about in the Other text area. The only required fields are Comment Category and a Comment entry.

If you would like to be contacted with a response to your comment, provide your email address or add your phone number in the comment section.

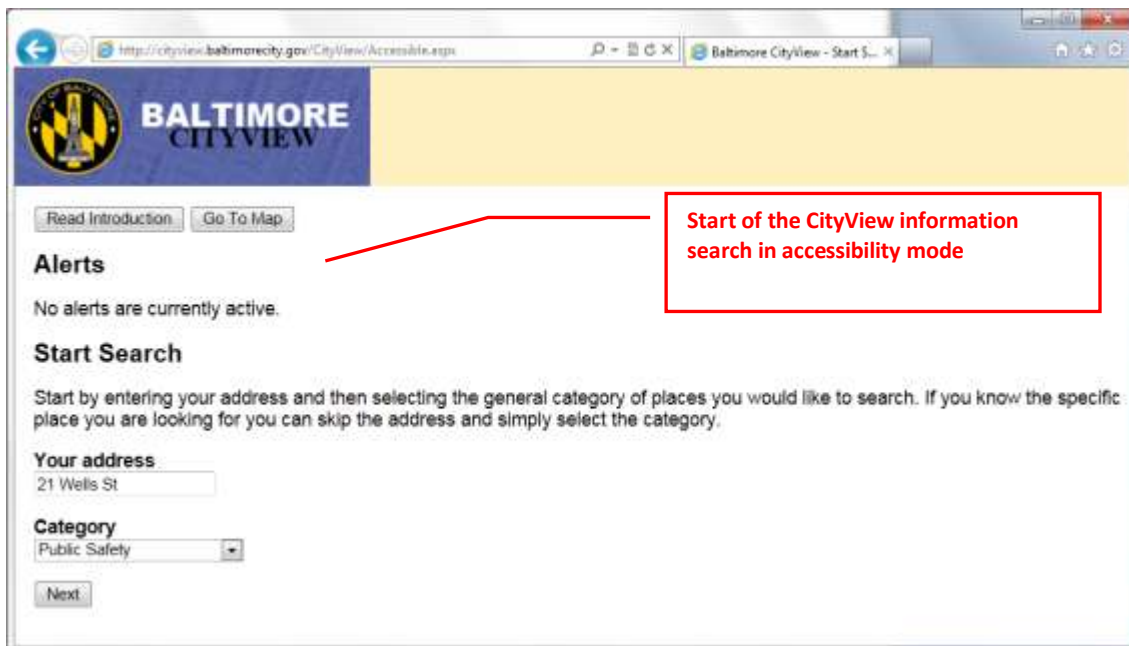
When finished with your comment, click on the Send button to submit.



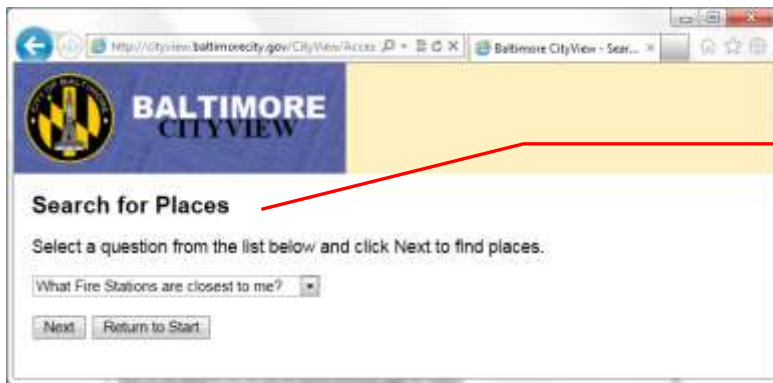
The screenshot shows the 'CityView' interface with a yellow background. At the top, there are three buttons: 'Contact', 'Disclaimer', and 'Comments'. Below these, there is a 'Comment On' dropdown menu with '[select]' and a red asterisk. Underneath is an 'Other' text input field. Below that is a 'Your Email' text input field. A large text area for the 'Comment' is marked with a red asterisk. At the bottom, there is a legend '* required' and two buttons: 'Send' and 'Clear Form'.

Accessibility

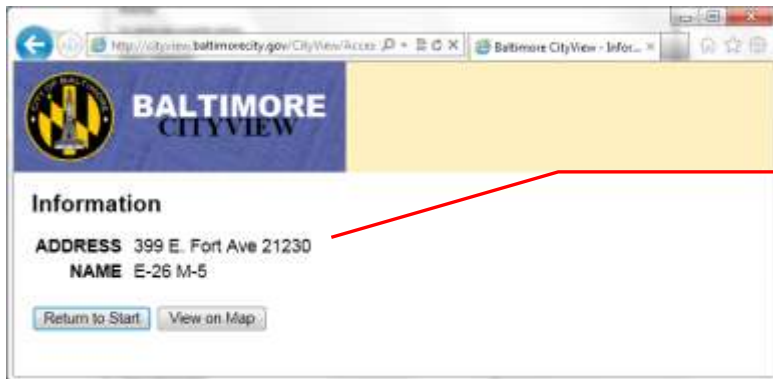
The CityView application also has an interface mode that works better with assistive technology such as screen readers. The Accessibility mode initiates a wizard type of approach with multiple screens used in the search process.



The screenshot shows a web browser window with the URL 'http://cityview.baltimorecity.gov/CityView/Accessible.aspx'. The page header features the Baltimore CityView logo and navigation buttons for 'Read Introduction' and 'Go To Map'. The main content area is titled 'Alerts' and states 'No alerts are currently active.' Below this is the 'Start Search' section, which includes instructions: 'Start by entering your address and then selecting the general category of places you would like to search. If you know the specific place you are looking for you can skip the address and simply select the category.' The form contains a 'Your address' field with '21 Wells St' entered, a 'Category' dropdown menu set to 'Public Safety', and a 'Next' button. A red box highlights the 'Start Search' section with the text 'Start of the CityView information search in accessibility mode', and a red line points from this box to the 'Go To Map' button.



Alternate Find interface for Categories and Topics of interest for the specified location



Results of the Find accessibility mode

For more information on the accessibility mode of the CityView application, go to: www.section508.gov